

# News from QUEEN ELIZABETH PARK CARE HOME

Dear friends

As we begin a new year, we've been reflecting on all the fun we've had over the last few months with our friends and family at QEP.



## Only treats this Halloween

It was an action-packed autumn for us, with our Halloween celebrations kick starting the fun! We were lucky to be visited by an adorable Trick or Treater Savannah, who arrived dressed as a nurse and went round visiting our residents to hand out sweet treats! Then in the evening we had a spooktacular fancy dress party with face painting and live music – and you know how we like a good sing-along! But our residents weren't the only ones having fun this season, and in November some of our team members got glammed up to attend the Surrey Care Awards, where QEP was shortlisted for Care Home of the Year! We are so very proud of them all.



## Remembrance Day



Our team members found a special way for our residents to mark Armistice Day by visiting the Poppy Factory in Richmond. We had a wonderfully creative time learning how poppies are made, we even had a go at making them ourselves and crafting poppy wreaths! It was a unique and uplifting way for our residents to come together, enjoying a cup of tea and red velvet poppy cupcake, while sharing stories, experiences, and memories of the war. We stopped for a hearty pub lunch in our favourite local on the way home. A much-deserved treat after a busy day!



## Pet therapy

One of our favourite things to do at QEP is host a pet therapy session with the Boonies bunny rabbits, dogs, chickens, and cats! We love to see how happy our animal charities make our residents and the joy such loving pets bring. So, we made sure we also scheduled many trips to our friends over at Mane Chance Sanctuary, even celebrating a resident's birthday in the barn amongst the donkeys! Our residents had a great time grooming and feeding them. We always find it's a wonderfully calming day, bonding with the gentle animals in nature; a great way to soothe the soul.

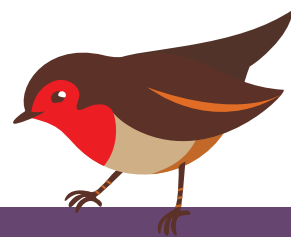


With love,  
**Heather De-Ninis**  
Home Manager

Queen Elizabeth Park Care Home, 1-72 Hallowes Close, Guildford, Surrey, GU2 9LL, Tel: 01483 924553

## A festive season of fun

When December came around, we welcomed Cycling Without Age, who took our residents on a thrilling trishaw ride to see the local Christmas lights. Everyone enjoyed a wonderful festive season of parties, choir performances, live music, mulled wine and mince pies, cosy nights in and exciting trips out! All surrounded by our wonderful friends - just the way it should be!



**We always love reading your comments on Facebook!  
Here are a few recent ones:**

"You are an amazing care home with all the lovely trips and entertainment!" Lynn

"Beautiful photos, we love seeing what you do with your residents." Mary

"Animal therapy truly works wonders. Thank you for being so caring!" Jennifer

If you don't wish to receive future newsletter updates from us, please email us at [marketing@carebase.org.uk](mailto:marketing@carebase.org.uk) and we'll of course, remove you from our list.

